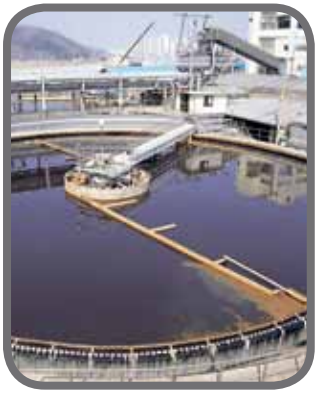


belven

PRODUCT RANGE
FIELD APPLICATIONS



WATER TREATMENT
DISTRICT ENERGY
TANK STORAGE
CONSTRUCTION & BUILDINGS
PROCESS INDUSTRY

high quality
valves



belven®

TANK STORAGE



REFERENCES

- GAZPROMNEFT-NORTHWEST ZAO - ST PETERSBURG - RUSSIA
- STOLT - SINGAPORE
- OILTANKING TERNEUZEN - THE NETHERLANDS
- SEATANK TERMINAL GHENT - BELGIUM
- MARTNES DEPOT TERTRE - BELGIUM
- STOLTHAVEN - MOERDIJK - THE NETHERLANDS
- SEATANK TERMINAL ANTWERP - BELGIUM
- OILTANKING STOLTHAVEN - ANTWERP - BELGIUM
- OILTANKING MALTA LTD - MALTA
- VITOL - ROTTERDAM - THE NETHERLANDS
- ARGOS - ROTTERDAM - THE NETHERLANDS
- THV ICA P/A NOORDNATIE - ANTWERP - BELGIUM
- Q8 DEPOT LUXEMBURG - LUXEMBURG
- ITC-RUBIS - ANTWERP - BELGIUM
- VOPAK TERMINALS - ANTWERP - BELGIUM
- VOPAK TERMINALS - EUROTANK - ANTWERP - BELGIUM
- EUROTANK - ROTTERDAM - THE NETHERLANDS
- ADPO NV - ANTWERP - BELGIUM
- OILTANKING STOLTHAVEN - ANTWERP - BELGIUM
- ORGANIKKIMYA - ROTTERDAM - THE NETHERLANDS
- VOPAK - ROTTERDAM - THE NETHERLANDS
- SEA-TANK TERMINAL - GHENT - BELGIUM
- SEA-TANK TERMINAL - ROUEN - FRANCE
- SEA-TANK TERMINAL - BORDEAUX - FRANCE
- VITOL EUROPOORT - ROTTERDAM - THE NETHERLANDS
- SHELL COMPANY - GERMANY
- ADPO GHENT NV - GHENT - BELGIUM
- NOORDNATIE TERMINALS - ANTWERP - BELGIUM
- LBC TANK TERMINAL - ANTWERP - BELGIUM
- LBC-ERTISA(BAYERSITE) - ANTWERP - BELGIUM
- ECC SURFACTANTS - OUDENAARDE - BELGIUM
- LANXESS - ANTWERP - BELGIUM
- AVIA BELGOMAZOUT - LIEGE - BELGIUM
- ALCA PETROLEUM - ANTWERP - BELGIUM
- ORGANIKKIMYA - ISTANBUL - TURKEY
- KUWAIT PETROLEUM - ANTWERP - BELGIUM
- ARTECO - ELF/TOTAL-LUBRICANTS - SCHOTEN - BELGIUM
- TOTAL - GRIMBERGEN - BELGIUM

TRUCK & (SEMI) TRAILERS INDUSTRY



(PETRO-) CHEMICAL INDUSTRY



METALURGICAL INDUSTRY



ball valves

BV 1



- 1-piece body ball valve, side entry
- reduced bore
- end connections according to BSP or NPT
- face to face dimension according to our production standard
- available in various body and seat material

SIZE: 8mm - 50mm / 1/4" - 2"

BV 4-S



- two-piece, split body ball valve
- true integral full bore
- flange connections according to EN 1092-1 / DIN 2501, B 16.5
- face to face dimension according to EN 558-1-series 14, B16.10
- available in various body, ball and stem material

SIZE: 25mm - 100mm / 1" - 4"

BV 2



- 2-piece ball valve
- full bore
- end connections according to BSP or NPT
- face to face dimension according to our production standard
- available in various body and seat material

SIZE: 8mm - 100mm / 1/4" - 4"

BV 6



- 3-way ball valve, L or T-bore
- reduced bore
- end connections according to BSP or NPT
- face to face dimension according to our production standard
- available in various body and seat material

SIZE: 8mm - 50mm / 1/4" - 2"

BV 3



- three-piece ball valve
- full bore
- end connections according to BSP, NPT, BW or SW
- face to face according to our production standard / M3
- available in various body and seat material

SIZE: 8mm - 150mm / 1/4" - 6"

BV 7



- one-piece body ball valve, side entry
- reduced or full bore
- flange connections according to DIN 2501 / DIN 2526 - PN 10/16, ANSI B 16.5
- face to face dimension according to DIN 3202-F18 (F4/F5), EN 558-1-14/15, ANSI B 16.10 - A-150
- available in various body and seat material

SIZE: DN 15 - DN 200 / 1/2" - 8"

BV 4



- two-piece, split body ball valve
- true integral full bore
- flange connections according to DIN 2501 / DIN 2526 - PN 10/16/40 / ANSI B16.5
- face to face dimension according to DIN 3202-F18 (F4/F5) & F1, EN 558-1-14/15 & 1 / ANSI B16.10 - A-150/A-300
- available in various body, ball and stem material
- different seat material PTFE, RTFE, CTFE, MPTFE, PEEK, ...
- trunion execution available on request

SIZE: DN 15 - DN 300 / 1/2" - 12"

BV 8



- wafer one-piece body ball valve, side entry
- reduced or full bore
- flange connections according to DIN 2501 / DIN 2526 - PN 10/16, ANSI B 16.5
- face to face dimension according to our production standard
- available in various body and seat material

SIZE: DN 15 - DN 200 / 1/2" - 8"

DISTRICT ENERGY



other markets

FOOD INDUSTRY



SHIP BUILDING SYSTEMS



FIRE PROTECTION SYSTEMS



REFERENCE

- ARAMCO - KINGDOM OF SAUDI ARABIA
- JEDDAH AIRPORT - KINGDOM OF SAUDI ARABIA
- KING ABDULLAH UNIVERSITY - KINGDOM OF SAUDI ARABIA
- KING ABDULLAH FINANCIAL DISTRICT - KINGDOM OF SAUDI ARABIA
- JABAL OMAR DEVELOPMENT - MAKHAH - KINGDOM OF SAUDI ARABIA
- SUEZ STEEL COMPANY - CAIRO - EGYPT
- OLAYA TOWERS - RIYADH - KINGDOM OF SAUDI ARABIA
- ZUHAIR FAYEZ - RIYADH - KINGDOM OF SAUDI ARABIA
- YAS-ISLAND - YI-01 / YI-02 - UNITED ARAB EMIRATES
- MUSAHHAH RESIDENTIAL CITY - UNITED ARAB EMIRATES
- DUBAI METRO DB-05-SZR2 - UNITED ARAB EMIRATES
- AL KIFAF - DM04-T-C-01-07 - UNITED ARAB EMIRATES
- CENTRAL MARKET AD-08 - ABU-DHABI - UNITED ARAB EMIRATES
- SHAMS ISLAND - ABU DHABI - UNITED ARAB EMIRATES
- PRINCES NOUR UNIVERSITY - KINGDOM OF SAUDI ARABIA
- GIRLS COLLEGE - KINGDOM OF SAUDI ARABIA
- AL KHEELY MALL - UNITED ARAB EMIRATES
- ZAYED MILITARY CITY - T-07 - UNITED ARAB EMIRATES
- AL RIGGA - DM-02 - UNITED ARAB EMIRATES
- AL BARSHA - UNITED ARAB EMIRATES
- RASHIDIYA - UNITED ARAB EMIRATES
- JEBEL ALI JUMEIRA - DM-06 - UNITED ARAB EMIRATES
- AL KIFAF - DM-04 - UNITED ARAB EMIRATES
- JABEL ALI INDUSTRIAL ZONE - DM-01 - UNITED ARAB EMIRATES
- AIRPORT ROAD - UNITED ARAB EMIRATES
- SPINNEYS - ABU-DHABI - UNITED ARAB EMIRATES
- AJMAN 2 - AJ-02 - UNITED ARAB EMIRATES
- ALDAR 10 - AD-07 - ABU-DHABI - UNITED ARAB EMIRATES
- CENTRAL MARKET - AD-08 - ABU-DHABI - UNITED ARAB EMIRATES
- DIP 3 & DIP 6 - ABU-DHABI - UNITED ARAB EMIRATES
- SHEIKH ZAYED ROAD - DB-05 - UNITED ARAB EMIRATES
- RAS AL KHAIMIYH EXP. - RK-01 - UNITED ARAB EMIRATES
- EMIRATES UNIVERSITY - UNITED ARAB EMIRATES
- ZAYED MILITARY CITY - T-08 - UNITED ARAB EMIRATES
- DUBAI METRO - DM-03 - UNITED ARAB EMIRATES
- DUBAI METRO - DM-05 - UNITED ARAB EMIRATES
- AL RAHA BEACH - RB-02 - UNITED ARAB EMIRATES
- AL RAHA BEACH - RB-04 - UNITED ARAB EMIRATES
- MINISTRY OF FINANCE - KINGDOM OF SAUDI ARABIA
- SHEIKH ZAYED ROAD-2 - DUBAI - UNITED ARAB EMIRATES
- KHALIFA 2 - ALDAR 10 - ABU-DHABI - UNITED ARAB EMIRATES
- MOHAMED BIN ZAYED CITY - AD-12 - ABU-DHABI - UNITED ARAB EMIRATES
- AL ANOUD - RIYADH - KINGDOM OF SAUDI ARABIA
- GRANADA CENTER - RIYADH - KINGDOM OF SAUDI ARABIA
- SABIC - RIYADH - KINGDOM OF SAUDI ARABIA
- COURT COMPLEX - RIYADH - KINGDOM OF SAUDI ARABIA
- AL FAISALIAH CENTRE - KINGDOM OF SAUDI ARABIA



butterfly valves

BV 10



- wafer type butterfly valve designed according EN 593
- flange connections according EN 1092-2 - PN 6/10/16, ASME/ANSI B16.5 class 150, ASME /ANSI B16.47 class 150 serie A
- face to face dimension according EN 558-1 series 20, ISO 5752 series 20, DIN 3202 K1, API 609 cat. A, BS 5155 table 6, MSS SP-67 table 3
- backup seat or soft seat execution
- available in various body, disc and seat material

SIZE: DN 32 - DN 1200 / 5/4" - 48"

BV 14



- double flanged concentric butterfly valve designed according EN 593
- flange connections according EN 1092-2 - PN 10/16, ASME/ANSI B16.5 class 150, ASME /ANSI B16.47 class 150 serie A
- face to face dimension according EN 558-1 series 13, ISO 5752 series 13, DIN 3202 F16, API 609 cat. B, BS 5155 table 6
- vulcanised seat on the body
- available in various body, disc and seat material

SIZE: DN 50 - DN 2000 / 2" - 80"

BV 11



- U-section wafer type butterfly valve designed according EN 593
- flange connections according EN 1092-2 - PN 10/16, ASME/ANSI B16.5 class 150, ASME /ANSI B16.47 class 150 serie A
- face to face dimension according EN 558-1 series 20, ISO 5752 series 20, DIN 3202 K1, API 609 cat. A, BS 5155 table 6, MSS SP-67 table 3
- backup seat execution
- available in various body, disc and seat material

SIZE: DN 50 - DN 1200 / 14" - 48"

BV 10-TFM



- wafer type, two-piece, TFM-lined butterfly valve designed according EN 593
- flange connections according EN 1092-2 - PN 10/16
- face to face dimension according EN 558-1 series 20, ISO 5752 series 20, DIN 3202 K1, API 609 cat. A, BS 5155 table 6, MSS SP-67 table 3
- TFM backup seat for high performance demands
- available in various body, stem, disc and seat material

SIZE: DN 25 - DN 600 / 1" - 24"

BV 12



- lug type butterfly valve designed according EN 593
- flange connections according EN 1092-2 - PN 6/10/16, ASME/ANSI B16.5 class 150, ASME /ANSI B16.47 class 150 serie A
- face to face dimension according EN 558-1 series 20, ISO 5752 series 20, DIN 3202 K1, API 609 cat. A, BS 5155 table 6, MSS SP-67 table 3
- backup seat or soft seat execution
- available in various body, disc and seat material

SIZE: DN 40 - DN 1200 / 1 1/2" - 48"

BV 12-TFM



- lug type, two-piece, TFM-lined butterfly valve designed according EN 593
- flange connections according EN 1092-2 - PN 10/16
- face to face dimension according EN 558-1 series 20, ISO 5752 series 20, DIN 3202 K1, API 609 cat. A, BS 5155 table 6, MSS SP-67 table 3
- TFM backup seat for high performance demands
- available in various body, stem, disc and seat material

SIZE: DN 40 - DN 600 / 1 1/2" - 24"

BV 13



- double flanged eccentric butterfly valve designed according EN 593
- flange connections according EN 1092-2 - PN 10/16
- face to face dimension according EN 558-1 series 13 and 14, ISO 5752 series 13 and 14, DIN 3202 F4 and F16, BS 5155 table 6
- resilient disc seal execution
- available in various body, disc and seat material

SIZE: DN 200 - DN 2800 / 8" - 112"

BV10-HP / BV12-HP



- double offset butterfly valve designed and manufactured according EN 593-ASME B16.34- API609
- flange connections according EN 1092-1 PN10 - EN 1092-1 PN16 - EN 1092-1 PN25 - ASME B16.5 150lbs
- face to face dimension according EN 558-1 series 20/API 609 cat.A/B ISO5752 tab 20
- testing acc. to ISO 5208 - API 598
- available in various body, disc and seat material

SIZE: DN 50 - DN 600 / 2" - 24"



HEATING & VENTILATION MARKET



REFERENCES

PROJECT NESTI FOR NESTOIL - ST. PETERSBURG, RUSSIA
 STABILISATION WATER PIPES FOR SOFIA WATER - SOFIA, BULGARIA

WATER TREATMENT PLANT STEP DE FÈS - MAROCCO-FÈS
 PUMPING STATION NEREMSBROEK, TONGEREN - BELGIUM
 PUMPING STATION MOLENSTRAAT, MEERHOUT - BELGIUM
 PUMPING STATION BOERETANGSTRAAT, MOL - BELGIUM
 PUMPING STATION TICHELBEK, ZULTE - BELGIUM
 PUMPING STATION BELLESTRAAT, AFFLIGEM - BELGIUM
 PUMPING STATION STUIVERSTRAAT, KAPELLE O/D BOS - BELGIUM
 PUMPING STATION GRIJSPEERDSTRAAT, HOOGLLEDE-GITS - BELGIUM

PUMPING STATION JOZEFSTRAAT - DURMESTRAAT, HEIST O/D BERG - BELGIUM

PUMPING STATION WILFORDKAAI, TEMSE - BELGIUM
 PUMPING STATION DIJKSTRAAT, MAASMECHELEN - BELGIUM
 PUMPING STATION HEUVELBOEKSTRAAT, WIELSBEKE - BELGIUM

PUMPING STATION MANDEL, WIELSBEKE - BELGIUM
 PUMPING STATION RIJSKWEG, WIELSBEKE - BELGIUM
 PUMPING STATION PONTSTRAAT, RONSE - BELGIUM
 PUMPING STATION GISTELSE STEENWEG, WESTKERKE - BELGIUM

PUMPING STATION TRUIDERSTEENWEG-GOLMEERZOUW-DAMSTRAAT, BORGLON-HOPERTINGEN - BELGIUM
 PUMPING STATION VENNENSTRAAT, GIERLE - BELGIUM
 PUMPING STATION SCHOOLSTRAAT, SINT-LIEVENS-HOUTEM - BELGIUM

PUMPING STATION HEVERBAAN, BOORTMEERBEEK - BELGIUM
 PUMPING STATION SMETLEDESTRAAT, LEDE - BELGIUM
 PUMPING STATION GLORIEUXSTRAAT, AALST - BELGIUM
 PUMPING STATION BENEDENSTRAAT, GHENT - BELGIUM
 PUMPING STATION, ENGSBERGEN - BELGIUM
 PUMPING STATION WATERMOLENSTRAAT, WETTEREN - BELGIUM

PUMPING STATION LOWEESTRAAT, WETTEREN - BELGIUM
 PUMPING STATION ASSELSTRAAT, GHENT - BELGIUM
 PUMPING STATION RENINGELSTRAAT, KEMMEL - BELGIUM
 PUMPING STATION VISSENAKEN, BELGIUM
 SEWAGE TREATMENT PLANT, ITEGEM - BELGIUM
 PUMPING STATION NEERIJSEBAAN, OUD-HEVERLEE
 PUMPING STATION GUIGOVEN, TONGEREN - BELGIUM
 PUMPING STATION ASSESTEENWEG, ASSE - BELGIUM

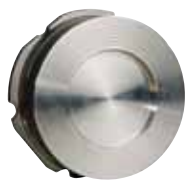


CONSTRUCTION & MACHINERY



AUTOMOTIVE MARKET

BV 36



- disco wafer check valve
- spring loaded execution
- flange connections according PN10/16/40 and A-150/A-300
- face to face dimension according DIN EN 558-1
- easy to install and maintenance free
- low opening pressure and low pressure drop
- automatically held in central position by the flange screws
- available in various body, disc and seat material

SIZE: DN 15 - DN 300 / 1/2" - 12"

BV 38



- wafer swing check valve
- flange connections according PN10/16/40 and A-150/A-300
- short face to face dimension according our production standard
- easy to install and maintenance free
- low opening pressure and low pressure drop
- automatically held in central position by the flange screws
- available in various body, disc and seat material

SIZE: DN 32 - DN 600 / 1 1/2" - 24"

BV 39



- wafer swing check valve
- spring loaded execution
- flange connections according PN10/16/40 and A-150/A-300
- short face to face dimension according our production standard
- easy to install and maintenance free
- low opening pressure and low pressure drop
- automatically held in central position by the flange screws
- available in various body, disc and seat material

SIZE: DN 32 - DN 600 / 1 1/2" - 24"

BV 40



- dual-plate check valve
- spring loaded execution
- flange connections according PN10/16/40 and A-150/A-300
- face to face dimension according our production standard
- easy to install and maintenance free
- low opening pressure and low pressure drop
- automatically held in central position by the flange screws
- available in various body, disc and seat material

SIZE: DN 50 - DN 600 / 2" - 24"

BV 41



- ball check valve
- flange connections according PN10/16 and A-150
- face to face dimension according DIN EN 558-1 serie 48, ANSI B16.10
- easy to install and maintenance free
- horizontal and vertical installation
- available in various body and seat material

SIZE: DN 50 - DN 400 / 2" - 16"

(knife) gate valves

BV 49



- gate valve
- flange connections according PN10/16 and A-150
- face to face dimension according DIN 3202-F4/F5, ANSI B16.10
- easy to regulate the flow
- available in various body and seat material

SIZE: DN 40 - DN 600 / 1 1/2" - 24"

BV 50



- wafer type knife gate valves
- flange connections according EN 1092-2 PN10
- uni-directional with one-piece body
- rising stem with non-rising handwheel
- design and testing according to MSS SP-81
- available in various body and seat material

SIZE: DN 50 - DN 1200 / 2" - 48"

dismantling joints

BV 51



- dismantling joints
- flange connections according PN10/16
- horizontal and vertical installation
- easy to install and maintenance free
- body and flanges available in steel A216 WCB

SIZE: DN 50 - DN 1600 / 2" - 64"

strainers

BV 56



- Y-strainers
- flange connections according EN 1092-2 PN16 (ISO 7005-2)
- face to face dimension according EN 5581- series 1 (DIN 3202 - F1)
- easy cleaning of strainer
- possible control of pressure drop by pressure gauges
- available in various body and seat material

SIZE: DN 15 - DN 600 / 1/2" - 24"

| | |
|---|--|
| TRIPLE OFFSET HIGH PERFORMANCE BUTTERFLY VALVES FLUE GASSES VALVES | BV 10-TRI BV 12-TRI BV 13-TRI |
| RUBBER EXPANSION JOINTS | BV 18 |
| BREATHER VALVES | BV 21 |
| FLAME ARRESTERS | BV 19 BV 20 |
| PRESSURE & VACUUM RELIEF VALVES | BV 22 BV 23 |
| EMERGENCY VENTS | BV 24 |
| GAUGE HATCHES | BV 25 |
| GLOBE VALVES | BV 26 BV 27 BV 28 BV 29 BV 31 BV 33 |
| BELLOWS VALVES | BV 30 |
| NEEDLE VALVES | BV 34 |
| PISTON CHECK VALVES | BV 35 BV 37 |
| FLANGED SWING CHECK VALVES | BV 42 |
| FOOT VALVES | BV 44 |
| THREADED AND WELDED GATE VALVES | BV 46 BV 47 |
| BASKET STRAINERS | BV 53 BV 54 |
| THREADED Y-STRAINERS | BV 55 |
| STRIPPER CRANE | BV 62 |
| DRAIN VALVE | BV 63 |
| SPRING SAFETY VALVE | BV 64 BV 66 |
| OVERFLOW VALVE | BV 65 |
| SIGHT GLASS | BV 70 |
| FLOATING VALVES | BV 71 BV 72 |
| DIFFERENTIAL PRESSURE VALVES | BV 74 |
| BALANCING VALVES | BV 75 |

MANUAL

- LEVER in different materials (long – short model), adjustable, butterfly or oval lever for small sizes, T-lever (standard for big sizes), fail safe lever, ...
- GEARBOX in different materials such as cast iron or aluminium, standard/lockable/with chainwheel, with visual open/close indication

PNEUMATIC

Double acting pneumatic actuator - DA

Single acting pneumatic actuator - SA

- Suitable for high duty cycles
- Fast opening and closing times
- Few moving parts: increases operational safety
- Namur design for easy mounting of accessories, as limit switches, (NAMUR) solenoid valves and bus communication systems
- Can be combined with emergency operation (manual override - MOD)

SA : Fail-safe function can easily be realized in spring closing or spring opening configuration, standard Belven chooses for operational safety – fail close position

ELECTRIC

Belven aims to find solutions suitable for the automation of valves for the industrial and construction sector. The usage of electronic components of last generation, together with precise mechanic, fruit of careful research and development, enables high performance and long-term reliability of the product.

- Wide range of voltage options
- Self-locking reduction gear
- The electronic circuit adjusts automatically the motor speed depending on the mechanical charge variations in order to drive the cycle always in the same time
- All actuators are provided with torque switch
- Thermal protection
- Usual required options, like extra limit switches, visual open/close indication, heater and even an emergency handwheel operator are (often) standard integrated in the actuator
- Open / close and modulating duty
- Different protection classes

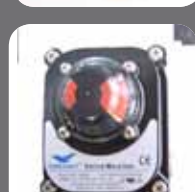
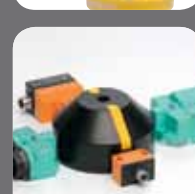
For more information related to our standardisation on electric actuators and brands, kindly contact our sales department.

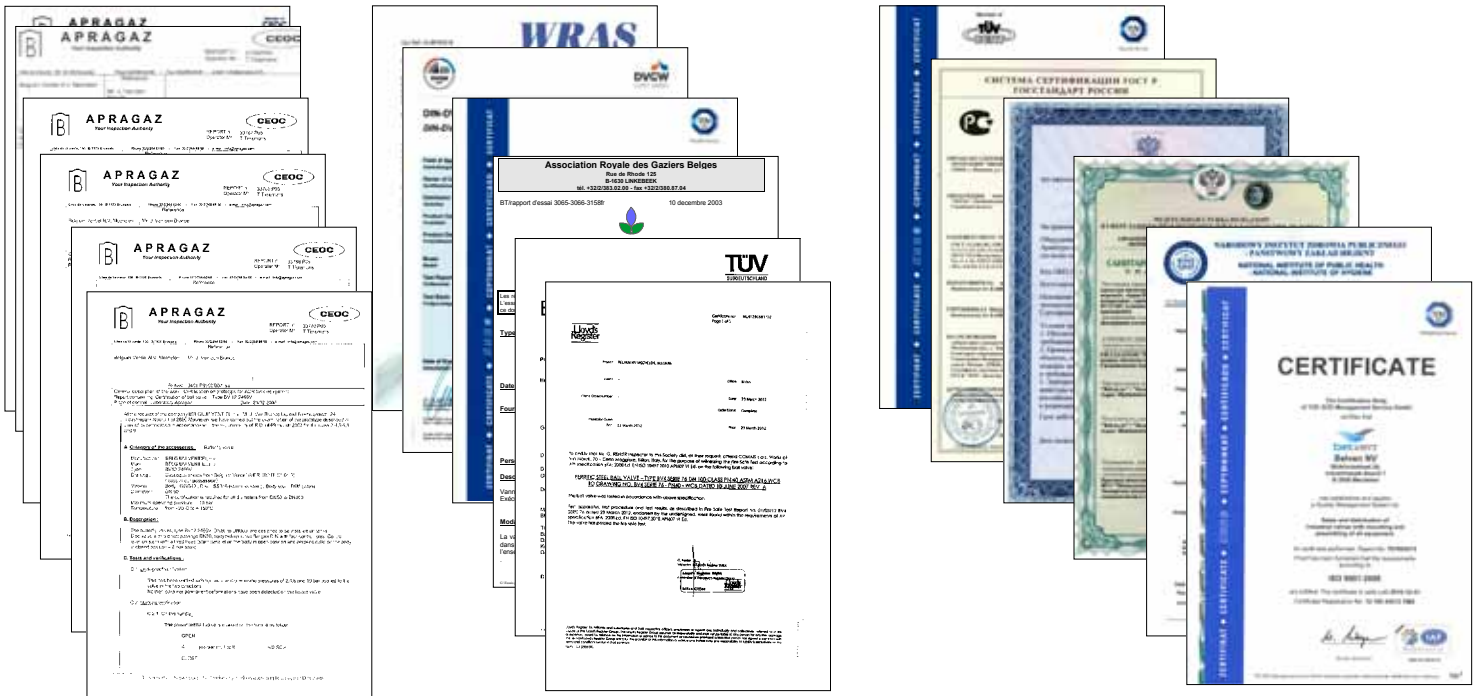
ELECTRIC HYDRAULIC

- High operational safety
- Modular design for easy mounting of accessories, like limit switches or visual open/close indication
- Suitable for submerged purposes (IP68) as option
- Different oil pressures possible

ACCESSORIES

- Stem extension in steel or stainless steel
- Visual indicators
- Solenoid valves, steered by different voltages /currents and available in different ATEX protection classes
- Limit switches (mechanical, inductive, capacitive, ...)





ADR | WRAS | DIN-DVGW | ATEX | KVBG | TA-LUFT | FIRE SAFE | ISO | PED | GOST | ROSTECHNADZOR | HYGIENIC

worldwide service



belven. your partner for valves

DESIGN

Valves can be found in many different designs. Every Belven valve offers a specific solution for a customer's demand. When defining your requested valve, next to body construction, the material is also an important issue to tackle. The Belven valve range offers you different materials such as brass, bronze, cast iron, copper, ductile iron, metal alloys, steels and stainless steel. Within these different materials and body constructions, Belven has optimised its range by offering standard product codes.

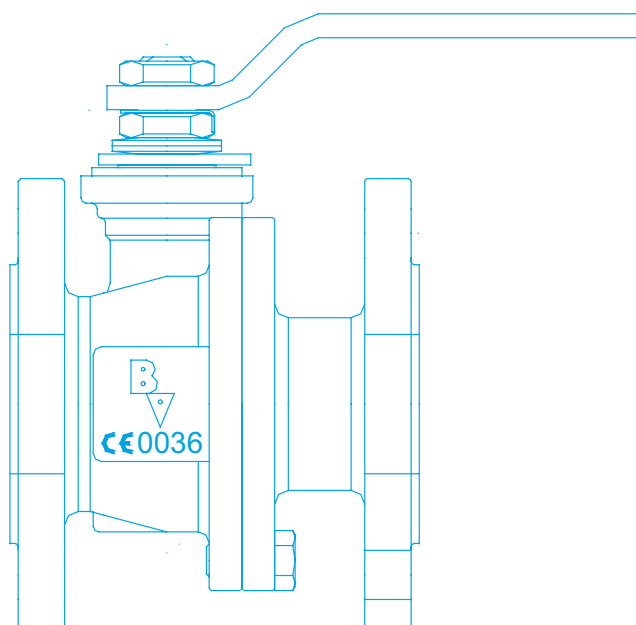


RESEARCH & DEVELOPMENT

Every valve has been produced with preliminary thorough research and testing. Traceability of the product is a key factor for Belven, it can furnish you with the necessary certificates on pressure and materials. Belven continuously strives for innovation through product development and expanding its experience by daily testing its own quality system. Belven is ISO 9001 certified and has all relevant product certificates.

SALES SUPPORT

Belven's partners are located worldwide and they can offer you the necessary support in your local market. Besides these local service points, the head offices has plenty of experienced people on each market to support you in finding the correct valve you require for.



FOLLOW UP & DELIVERY

At order placement, the Belven sales and logistic team follows your order carefully to ensure your goods are handled as quickly as possible. This way, you will be notified in due course when your goods can be expected your way. The central warehouse in Belgium carries a large stock of standard product types. Deliveries ex works, transport by road, cargo or air, express deliveries; all is possible through Belven's well organised logistic department. Belven supervises the transport through its contacts and will gladly organise all relevant export documentation you might require.





Industriepark Mechelen Noord 1
Blokhuysstraat 24 | 2800 Mechelen | Belgium
tel. +32 (0)15 29 40 70
fax +32 (0)15 20 14 13
info@belven.com
www.belven.com



PRODOVER-REV3-010314

www.belven.com